

ATLANTIC MOBILE CONCRETE PUMP

MCP 43



The Atlantic MCP 43 is a high-performance truck-mounted concrete boom pump engineered for maximum efficiency, reliability, and precision on demanding job sites. Assembled on a standard 4-axle chassis, the MCP 43 features a robust 43-meter, 5-section, RZ-type placing boom developed using advanced FEM design techniques for optimal strength and flexibility.

Built with user-focused technologies and robust safety systems, this pump includes fully hydraulic outrigger controls, with front X-style and rear swing-out outriggers, ensuring maximum stability during operation. The open hydraulic circuit pumping unit offers consistent concrete flow, while advanced features such as electrical hydraulic reversing, MPS (Micro Pressure Shock) buffering, and S-valve technology deliver smoother performance and reduced wear.

The intelligent electrical control system, paired with remote and manual boom and pump operation, enables safe and precise control on-site. Additional innovations such as automatic piston return, centralized lubrication, and multiple engine protection systems make the MCP 43 a low-maintenance, high-durability solution.

With its comprehensive anti-tipping safety features and integrated lighting system, the Atlantic MCP 43 stands out as a reliable, high-capacity concrete pumping solution for commercial and infrastructure projects.

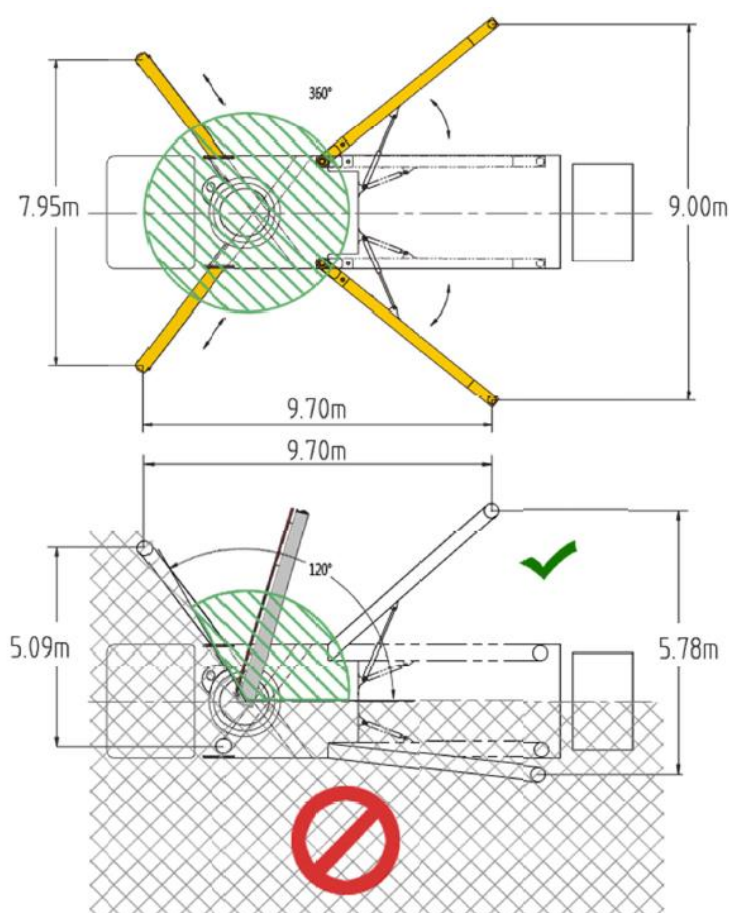
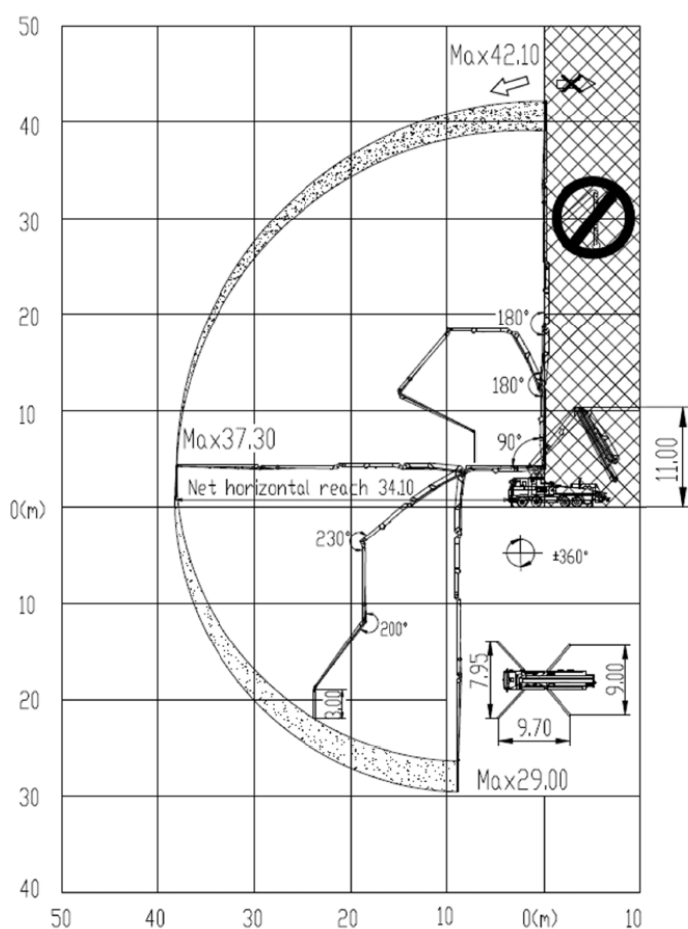
MCP 43 - Key Features:

- ✓ Assembly on a standard 4-axle chassis.
- ✓ 5 sections placing boom, "RZ" folding system, FEM designed.
- ✓ Fully hydraulic outrigger controls on both sides of the truck.
- ✓ Pumping unit with open hydraulic circuit.
- ✓ MPS (Micro Pressure Shock) reversing buffering technology.

* Mobile Concrete Pump * High-reach Concrete Pump * Boom Pump * 43-meter Concrete Pump * Truck-mounted Concrete Pump *

- ✓ Remote / Manual control method for boom and pumping unit.
- ✓ Centralized lubrication system for the pumping unit.
- ✓ Piston automatic return technology, enabling easy piston replacement.
- ✓ Electrically controlled hydraulic reversing.
- ✓ Large diameter slide valve with casting oil passage.
- ✓ Intelligent electrical control system.
- ✓ Main hydraulic pump overload protection technology.
- ✓ Engine overload protection technology.
- ✓ Engine low-speed protection technology.
- ✓ Anti-tipping safety protection technology.
- ✓ Lighting system.

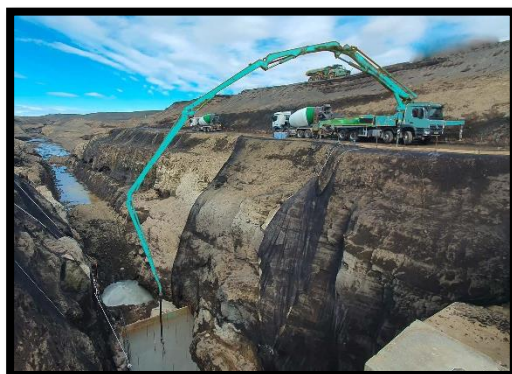
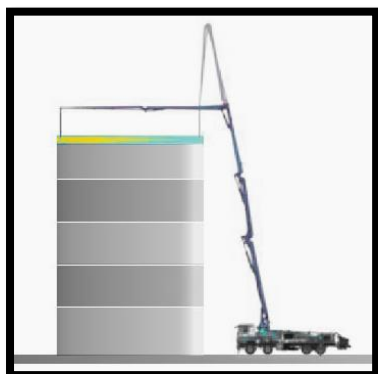
OPERATION RANGE



ATLANTIC MOBILE CONCRETE PUMP - SPECIFICATIONS

PUMPING UNIT TECHNICAL DATA	
ITEM DESCRIPTION	PARAMETERS
Max. Concrete Output (Theor.) *	170 m ³ /hr
Max. Concrete Pressure	102 bar
Max. Aggregate Size	≤ 40 mm
Concrete Cylinder (Diameter × Stroke)	Ø 260 × 2,000 mm
Hopper Filling Height	1,540 mm
Hopper Capacity	600 litre
Transfer Tube	‘S’ Valve
Max. Tube Swing Time	25~27 per min.

TECHNICAL DATA FOR TRAVEL	
Dimensions (L x B x H)	12,385 × 2,540 × 4,000 mm
Total Weight	35,800 kg
Number of Axles	4 Axles
Wheelbase	1950 + 4500 + 1400 mm
Max. Power	440 HP
Engine Displacement	10.518 litre





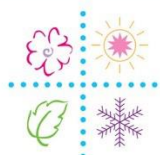
PLACING BOOM TECHNICAL DATA		
ITEM DESCRIPTION		PARAMETERS
Max. Vertical Reach		42.1 m
Max. Horizontal Reach (From slewing axis centre)		37.3 m
Max. Depth Reach		29 m
Pipeline Diameter		Ø 125 mm (5½")
Number of Boom Sections		5 Sections
1 st Section unfolding angle		90°
2 nd Section unfolding angle		180°
3 rd Section unfolding angle		180°
4 th Section unfolding angle		230°
5 th Section unfolding angle		200°
Rotating Angle of the Placing Boom		± 360°
Stabilizer Span	Longitudinal Span	9,700 mm
	Front Stabilizer Transverse Span	7,950 mm
	Rear Stabilizer Transverse Span	9,000 mm

* All data is based on experience and dependent on the materials used. Machine design and construction are subject to technical modifications and upgrades.

MCP 43 - Applications:

- ✓ Underground construction.
- ✓ Marine and port construction.
- ✓ Remote sites with limited access.
- ✓ Highway and road construction.
- ✓ High-rise building concrete placement.
- ✓ Piling foundations.
- ✓ Bridge construction.
- ✓ Flood protection walls.
- ✓ Industrial facility rooftops.
- ✓ Dams and water retaining structures.

DELIVERING MORE EFFICIENCY, FLEXIBILITY AND POWER



ACE CENTRO ENTERPRISES

P. O. Box 95325, Abu Dhabi - U.A.E.

T : +971 2 6737900

E : salesteam@acecentro.com W : www.acecentro.com

